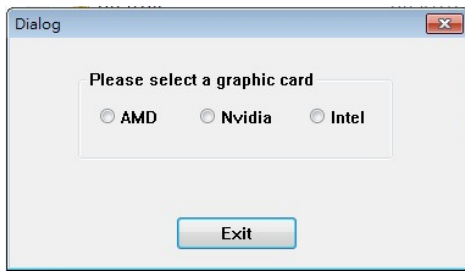
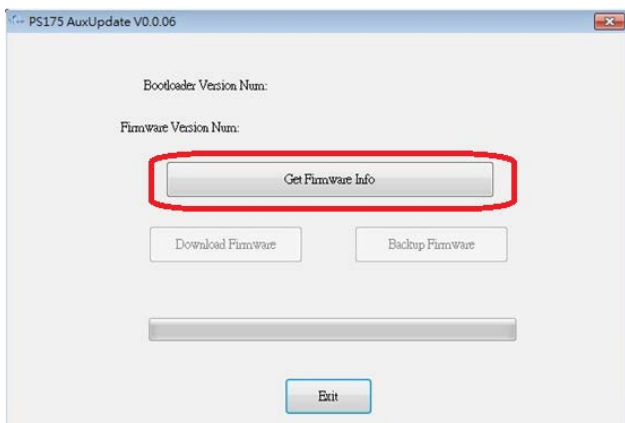


**Step1:** Need to connector the dongle to the GPU and monitor

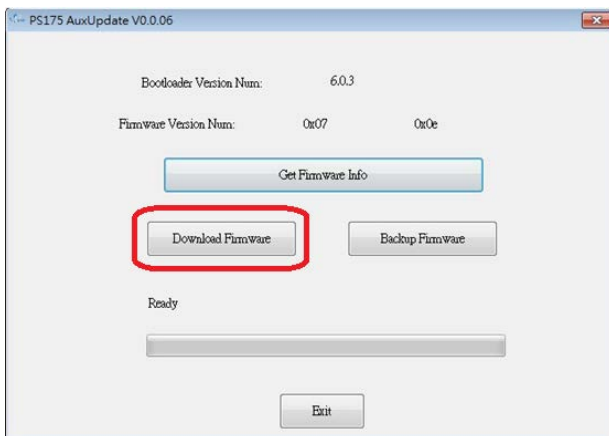
**Step2:** Open the “AuxUpdate” tool and select your GPU brand



**Step3:** Click “Get Firmware Info” to get the current FW version.



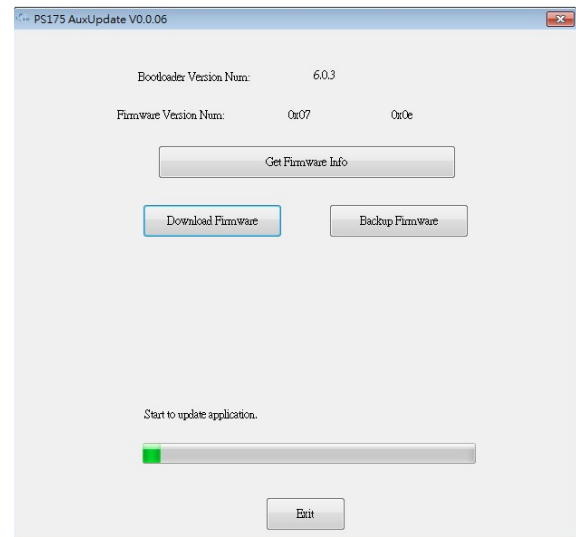
**Step4:** Click “Download Firmware” and select the new FW.



**Step5:** Browse to where

“ps176b0\_0x07.0x04.0x55\_encrypt\_bank12.hex” file is located and select open to select the firmware file.

**Step6:** Start the update; it will take a few minutes. You should see the update in progress.



**Step7:** After completing. Close the Program and Un-plug then re-plug the dongle. Perform Step 2 and 3 and click “Get Firmware Info” again and it will be show 0x07 0x55.

