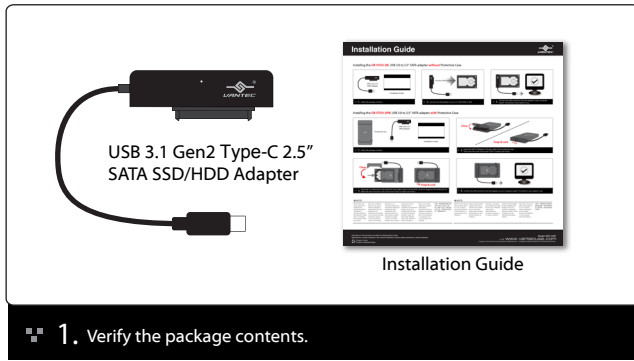
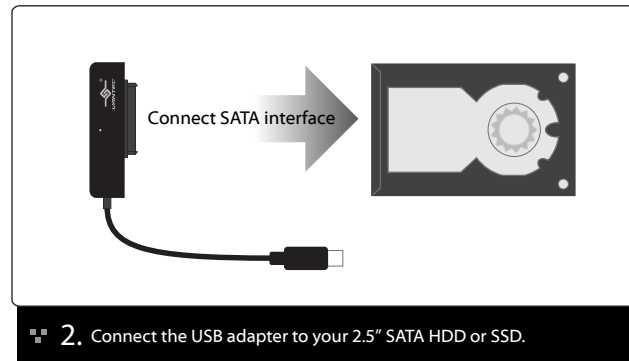


Installation Guide

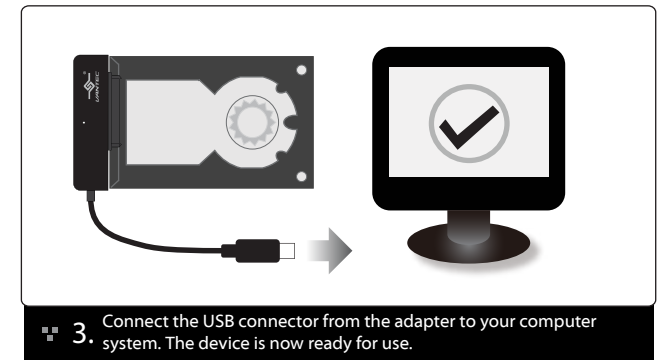
Installing the **CB-STC31-2PB**, USB 3.1 Gen2 Type-C 2.5" SATA SSD/HDD Adapter **without** Protective Case



1. Verify the package contents.

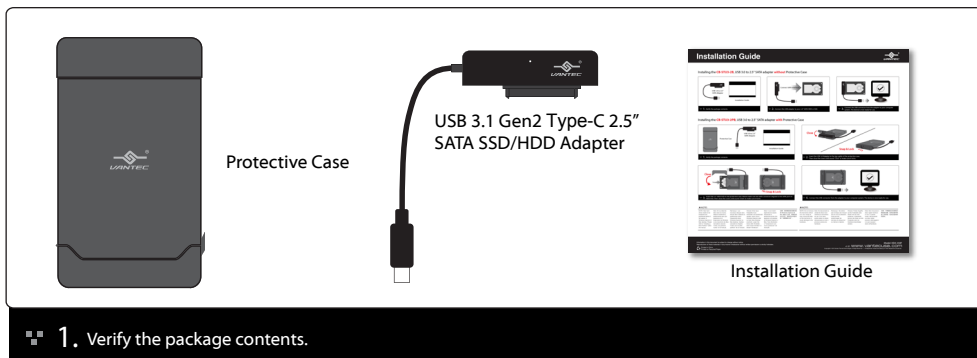


2. Connect the USB adapter to your 2.5" SATA HDD or SSD.

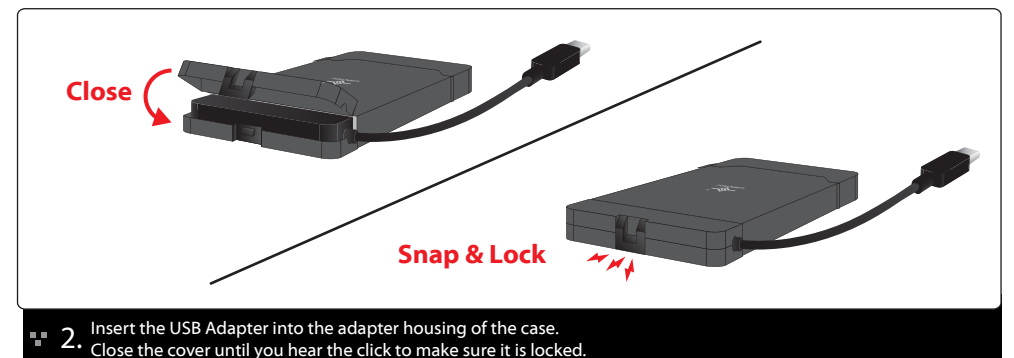


3. Connect the USB connector from the adapter to your computer system. The device is now ready for use.

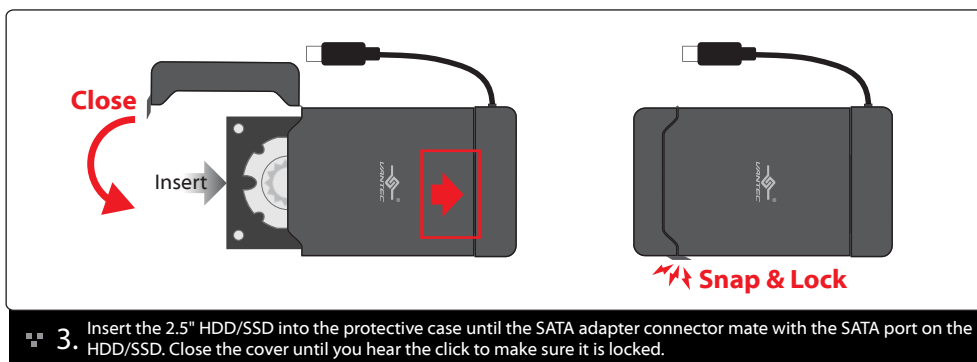
Installing the **CB-STC31-2PB**, USB 3.1 Gen2 Type-C 2.5" SATA SSD/HDD Adapter **with** Protective Case



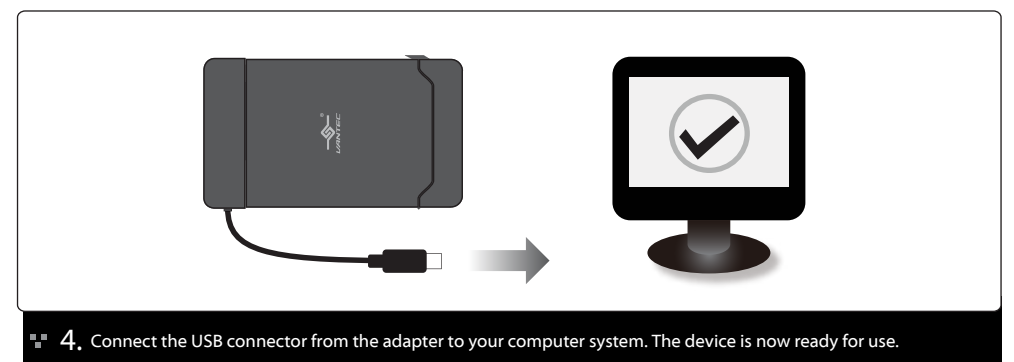
1. Verify the package contents.



2. Insert the USB Adapter into the adapter housing of the case. Close the cover until you hear the click to make sure it is locked.



3. Insert the 2.5" HDD/SSD into the protective case until the SATA adapter connector mate with the SATA port on the HDD/SSD. Close the cover until you hear the click to make sure it is locked.



4. Connect the USB connector from the adapter to your computer system. The device is now ready for use.

NOTE:

NOTE: New hard drives needs to be initialized and partitioned before it will appear in Windows Explorer or Mac desktop. Please refer to "Creating a New Partition" within the manual.

Nota: Si la unidad de disco duro es nueva, deberá inicializarla y particionarla para que aparezca en el Explorador de Windows o en el escritorio de Mac. Consulte la sección "Crear una partición nueva" en el manual.

Remarque : Les nouveaux disques durs doivent être initialisés et partitionnés avant d'apparaître dans Windows Explorer ou Mac desktop. Veuillez consulter le chapitre "Créer une nouvelle partition" de ce manuel.

Hinweis: Eine neue Festplatte muss initialisiert und partitioniert werden, bevor sie im Windows Explorer oder auf dem Mac-Desktop erscheint. Lesen Sie hierzu bitte "Erstellen einer neuen Partition" in diesem Handbuch.

Nota: I nuovi dischi rigidi devono essere inizializzati e partizionati prima che appaiano nel desktop di Windows Explorer o Mac. Fare riferimento a "Creazione di una nuova partizione" nel manuale.

注意：新的硬盘驱动器出现在 Windows Explorer 或 Mac 桌面上之前，需要初始化并分区。请参考本手册中的“创建新的分区”。

NOTE:

NOTE: Do not remove the hard drive while it is in use. Doing so may corrupt the data on the hard drive or cause damage to the hardware.

Nota: No desconecte la unidad de disco duro mientras se encuentre en uso. Si lo hace, podría dañar los datos almacenados en ella o provocar averías de hardware.

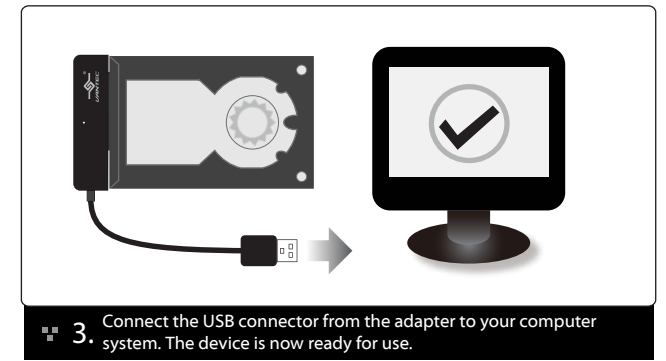
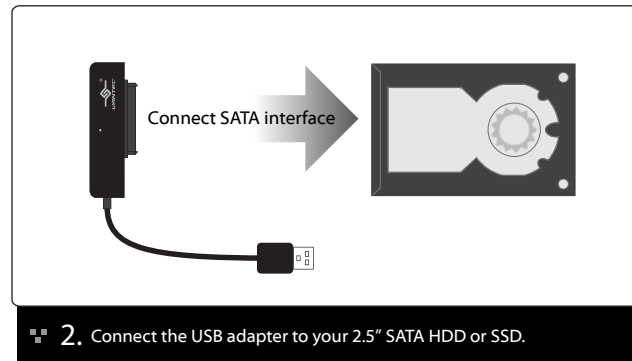
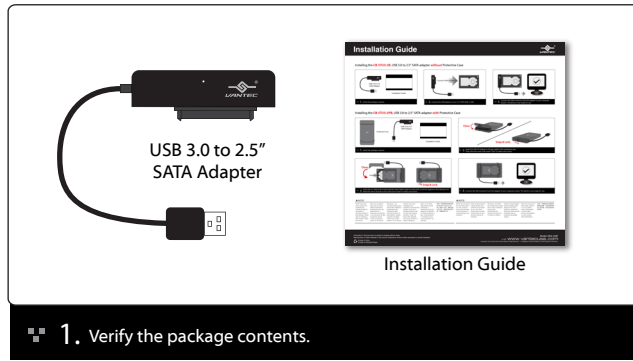
Remarque : Ne retirez pas le disque dur lorsqu'il est en cours d'utilisation. Cela pourrait endommager les données du disque dur ou même le matériel.

Hinweis: Finden Zugriffe auf die Festplatte statt, dürfen Sie sie nicht entfernen. Andernfalls können die Daten auf der Festplatte oder die Hardware beschädigt werden.

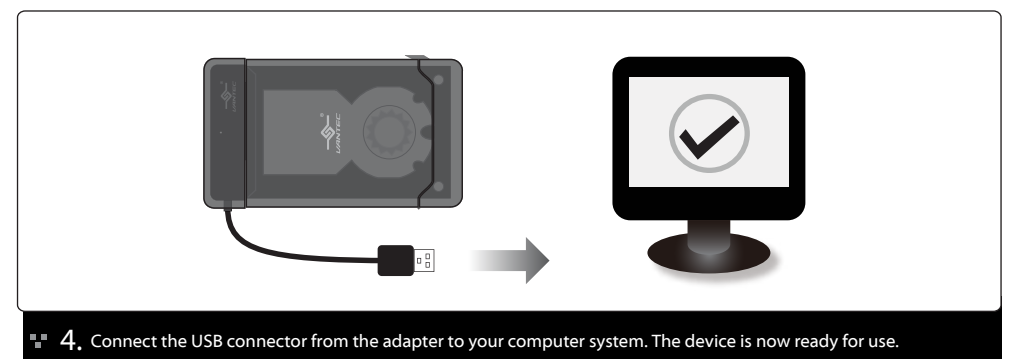
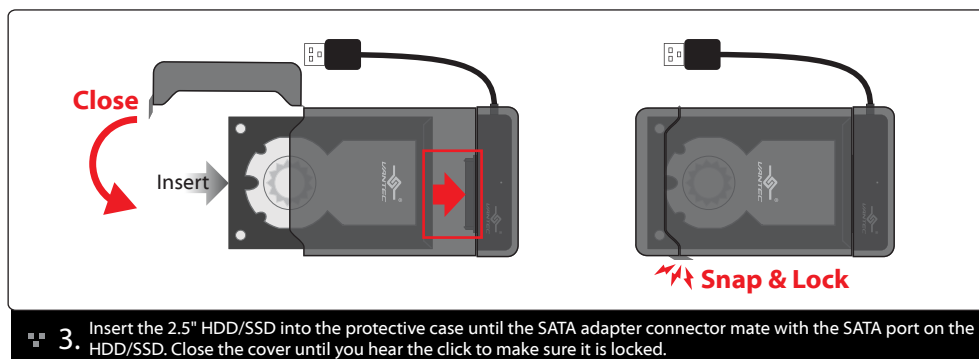
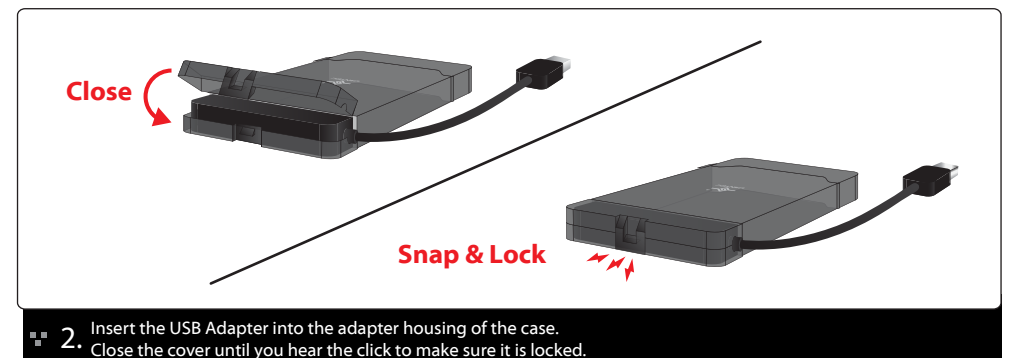
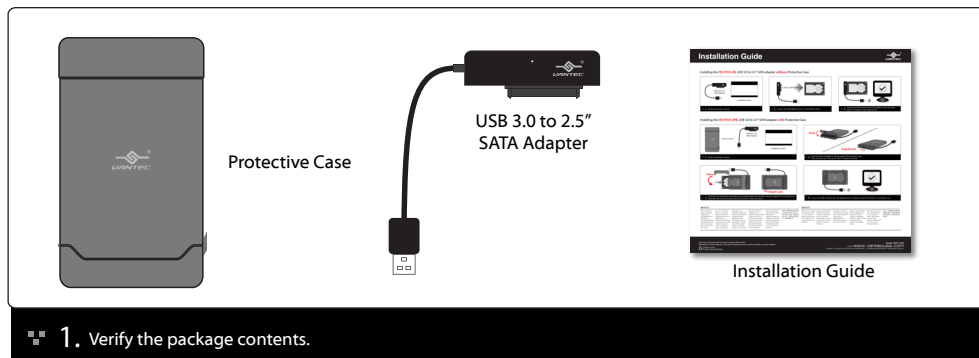
Nota: Non rimuovere il disco rigido mentre è in uso. In questo modo i dati presenti sul disco rigido possono danneggiarsi o si può causare danni all'hardware.

注意：不要移除正在使用的硬盘驱动器，否则会破坏硬盘上的数据，甚至会造成硬件损坏。

Installing the **CB-STU3-2B**, USB 3.0 to 2.5" SATA Hard Drive Adapter **without** Protective Case



Installing the **CB-STU3-2PB**, USB 3.0 to 2.5" SATA Hard Drive Adapter **with** Protective Case



NOTE:

NOTE: New hard drives needs to be initialized and partitioned before it will appear in Windows Explorer or Mac desktop. Please refer to "Creating a New Partition" within the manual.

Nota: Si la unidad de disco duro es nueva, deberá inicializarla y particionarla para que aparezca en el Explorador de Windows o en el escritorio de Mac. Consulte la sección "Crear una partición nueva" en el manual.

Remarque : Les nouveaux disques durs doivent être initialisés et partitionnés avant d'apparaître dans Windows Explorer ou Mac desktop. Veuillez consulter le chapitre "Créer une nouvelle partition" de ce manuel.

Hinweis: Eine neue Festplatte muss initialisiert und partitioniert werden, bevor sie im Windows Explorer oder auf dem Mac-Desktop erscheint. Lesen Sie hierzu bitte "Erstellen einer neuen Partition" in diesem Handbuch.

Nota: I nuovi dischi rigidi devono essere inizializzati e partizionati prima che appaiano nel desktop di Windows Explorer o Mac. Fare riferimento a "Creazione di una nuova partizione" nel manuale.

注意：新的硬盘驱动器出现在 Windows Explorer 或 Mac 桌面上之前，需要初始化并分区。请参考本手册中的“创建新的分区”。

NOTE:

NOTE: Do not remove the hard drive while it is in use. Doing so may corrupt the data on the hard drive or cause damage to the hardware.

Nota: No desconecte la unidad de disco duro mientras se encuentre en uso. Si lo hace, podría dañar los datos almacenados en ella o provocar averías de hardware.

Remarque : Ne retirez pas le disque dur lorsqu'il est en cours d'utilisation. Cela pourrait endommager les données du disque dur ou même le matériel.

Hinweis: Finden Zugriffe auf die Festplatte statt, dürfen Sie sie nicht entfernen. Andernfalls können die Daten auf der Festplatte oder die Hardware beschädigt werden.

Nota: Non rimuovere il disco rigido mentre è in uso. In questo modo i dati presenti sul disco rigido possono danneggiarsi o si può causare danni all'hardware.

注意：不要移除正在使用的硬盘驱动器，否则会破坏硬盘上的数据，甚至会造成硬件损坏。

Federal Communications Commission Statement

This device complies with part 15 of the FCC Rules. Operation is subject to the following two conditions:

- (1) This device may not cause harmful interference, and
- (2) this device must accept any interference received, including interference that may cause undesired operation.

NOTE: This equipment has been tested and found to comply with the limits for a Class B digital device, pursuant to part 15 of the FCC Rules. These limits are designed to provide reasonable protection against harmful interference in a residential installation. This equipment generates, uses and can radiate radio frequency energy and, if not installed and used in accordance with the instructions, may cause harmful interference to radio communications. However, there is no guarantee that interference will not occur in a particular installation. If this equipment does cause harmful interference to radio or television reception, which can be determined by turning the equipment off and on, the user is encouraged to try to correct the interference by one or more of the following measures:

- Reorient or relocate the receiving antenna.
- Increase the separation between the equipment and receiver.
- Connect the equipment into an outlet on a circuit different from that to which the receiver is connected.
- Consult the dealer or an experienced radio/ TV technician for help.

FCC Radiation Exposure Statement

The device has been evaluated to meet general RF exposure requirement.

The device can be used in portable exposure condition without restriction.

Warning: Changes or modifications to this unit not expressly approved by the party responsible for compliance could void the user's authority to operate the equipment.